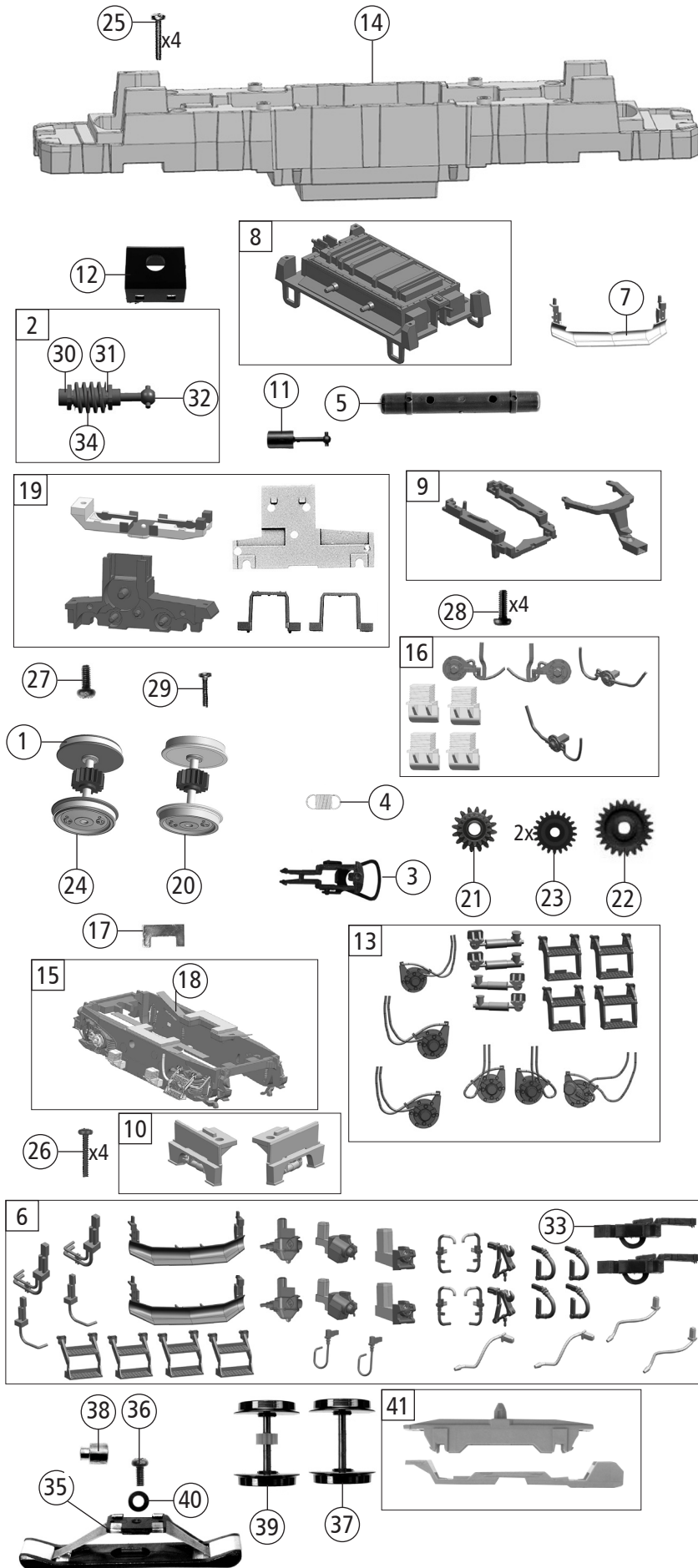


| Pos. Nr. | Pos.no. | Beschreibung              | Description               | Art.-Nr. | Art.no. | Preisgruppe | Price bracket |
|----------|---------|---------------------------|---------------------------|----------|---------|-------------|---------------|
| 47       |         | Platine kpl.m.LED-Platine | PCB complete with LED-PCB | 141061   |         | 26          |               |
| 48       |         | Soundbox                  | Sound box                 | 139681   |         | 6           |               |
| 49       |         | Lautsprecher              | Loudspeaker               | 129524   |         | 13          |               |
| 50       |         | Sounddecoder              | Sound-decoder             | 129000   |         | 39          |               |

|         |      |    |   |   |
|---------|------|----|---|---|
| 7500013 | SNCF | BB | = |   |
| 7510013 |      |    | = | 🔊 |
| 7520013 |      |    | ~ | 🔊 |

| Pos. Nr. | Pos.no. | Beschreibung                        | Description                                 | Art.-Nr. | Art.no. | Preisgruppe | Price bracket |
|----------|---------|-------------------------------------|---|----------|---------|-------------|---------------|
| 1        |         | Gehäuse kpl.Betr.Nr. BB 22338       | Body complete loco nr. BB 22338             | 151874   |         | 38          |               |
| 2        |         | TS - Leitung1, Halter, KVB-Antenne  | Part set - Wiring, holder, KVB-Antenna      | 131460   |         | 7           |               |
| 3        |         | Dachaufsatz                         | Roof superstructure                         | 141040   |         | 8           |               |
| 4        |         | Stromabnehmer AM18                  | Pantograph AM 18                            | 85583    |         | 19          |               |
| 5        |         | Stromabnehmer AM18                  | Pantograph AM18                             | 85584    |         | 19          |               |
| 6        |         | Führerstand und Abdeckung           | Driver's cab and cover                      | 144110   |         | 8           |               |
| 7        |         | Lüftergitter                        | Ventilator grill                            | 141041   |         | 7           |               |
| 8        |         | Stirnfenster                        | Front window                                | 145418   |         | 6           |               |
| 9        |         | TS-Stirntritte                      | Part set treads                             | 151875   |         | 13          |               |
| 10       |         | TS-Lichtleiter und Fenster          | Part set light conductor and window         | 141044   |         | 11          |               |
| 11       |         | TS-Leitungen und Dachgriffstange    | Part set wires and roof handrail            | 144114   |         | 10          |               |
| 12       |         | Stirngriff                          | Handrail                                    | 151876   |         | 5           |               |
| 13       |         | Scheibenwischer links und rechts    | Windscreen wiper left and right             | 145423   |         | 5           |               |
| 14       |         | GPS - Antenne                       | GPS - Antenna                               | 144122   |         | 3           |               |
| 15       |         | Hauptleitung                        | Mains line                                  | 144113   |         | 11          |               |
| 16       |         | TS-Isolatoren                       | Part set isolators                          | 144118   |         | 7           |               |
| 17       |         | TS - Isolatoren - basaltgrau        | Part set isolator                           | 131395   |         | 11          |               |
| 18       |         | Puffer + Puffersockel               | Buffer + buffer sleeve                      | 151879   |         | 5           |               |
| 19       |         | Heizkabel kurz                      | Heat cable short                            | 147926   |         | 3           |               |
| 20       |         | TS - Rohre                          | Part set - tub                              | 151878   |         | 4           |               |
| 21       |         | Platine kpl.m.LED-Platine           | PCB complete with LED-PCB                   | 141032   |         | 24          |               |
| 22       |         | Brückenstecker                      | Jumper                                      | 133241   |         | 10          |               |
| 23       |         | Motor m.2Schwungm. und Kardanschale | Motor with 2 flywheels and cardan reception | 85112    |         | 28          |               |
| 24       |         | Kardanschale kurz 1,5mm             | Cardan reception short 1,5mm                | 87129    |         | 4           |               |
| 25       |         | Kohlebürste                         | Carbon brush                                | 89743    |         | 6           |               |
| 26       |         | Bürstenfeder                        | Brush spring                                | 114197   |         | 3           |               |
| 27       |         | Motordämpfer                        | Motor silencer                              | 113376   |         | 4           |               |
| 28       |         | Kontaktfeder                        | Contact spring                              | 116876   |         | 3           |               |
| 29       |         | Bremsschlauch kurz links und rechts | Brake hose short left and right             | 145422   |         | 4           |               |
| 30       |         | Schraube M2x7 mm                    | Screw M2x7 mm                               | 85673    |         | 3           |               |
| 31       |         | Türgriffstange 16,5mm               | Door handle 16,5mm                          | 141082   |         | 5           |               |
| 32       |         | Stromabnehmerisolator               | Isolator for panto.                         | 108105   |         | 3           |               |
| 33       |         | TS - Isolatoren                     | Part set - Isolators                        | 138674   |         | 8           |               |
| 34       |         | Griffstange kurz                    | Handrail short                              | 151877   |         | 3           |               |
| 35       |         | TS - Isolatoren                     | Part set - Isolators                        | 144115   |         | 6           |               |
| 36       |         | Schraube M1,5x5 mm                  | Screw M1,5x5 mm                             | 108137   |         | 3           |               |
| 37       |         | TS - Isolatoren                     | Part set - Isolators                        | 144117   |         | 12          |               |
| 38       |         | Hauptschalter                       | Mains switch                                | 100775   |         | 4           |               |
| 39       |         | TS-Dachleitungen                    | Part set roof wires                         | 144119   |         | 4           |               |
| 40       |         | GF-Schraube M2x5 mm                 | Self-tapping screw M2x5 mm                  | 114966   |         | 3           |               |
| 41       |         | SK-Schraube M1,6x4 mm               | SK-Screw M1,6x4 mm                          | 115161   |         | 3           |               |
| 42       |         | Motordistanzplatte                  | Motor spacer plate                          | 141066   |         | 6           |               |
| 43       |         | Kasten klein                        | Small box                                   | 138675   |         | 4           |               |
| 44       |         | Antenne + Dachblindflansch          | Antenna + roofblinds flanch                 | 131472   |         | 6           |               |
| 45       |         | UIC - Dose                          | UIC - Socket                                | 151880   |         | 3           |               |
| 46       |         | HS - Isolator                       | HS - Isolator                               | 144121   |         | 3           |               |



| Pos. Nr.<br>Pos.no.      | Beschreibung<br>Description   | Art.-Nr.<br>Art.no. | Preisgruppe<br>Price bracket |
|--------------------------|---|---------------------|------------------------------|
| 7500013                  | SNCF BB   | =                   |                              |
| 7510013                  |   | =                   |                              |
| 7520013                  |   | ~                   |                              |
| 1                        | Hafrings. 10Stk. 12,9-14,6 mm<br>Traction tyre set,10 pcs.,12,9-14,6 mm       | 40070               | ---                          |
| 2                        | Schneckensatz mit Kardankugel<br>Set of worm gear incl.cardan ball            | 113705              | 13                           |
| 3                        | Standardkupplung<br>Standard coupling   | 89246               | 6                            |
| 4                        | Zugfeder<br>Draw spring   | 86208               | 3                            |
| 5                        | Behälter<br>Container   | 107722              | 3                            |
| 6                        | Zurüstbeutel<br>Bag with accessories  | 151881              | 16                           |
| 7                        | Schneepflug<br>Snow plow  | 131372              | 5                            |
| 8                        | Trafwanne<br>Transformer tub  | 144100              | 10                           |
| 9                        | Kinematik + Deichsel<br>Kinematics + Shaft                                    | 144101              | 7                            |
| 10                       | Drehgestellämpfer links und rechts<br>Bogie shock absorber left&right         | 144102              | 4                            |
| 11                       | Kardanwelle<br>Cardan shaft   | 109194              | 6                            |
| 12                       | Schneckendeckel<br>Worm gear cover  | 107095              | 5                            |
| 13                       | TS - Blendesteckteile<br>Part set - Bogie plug-in parts                       | 131462              | 6                            |
| 14                       | Grundrahmen<br>Basic frame  | 144079              | 16                           |
| 15                       | Blende kpl.mit Litzen<br>Bogie frame complete with leads                      | 144103              | 16                           |
| 16                       | TS-Blendensteckteile<br>Set of cover plug-in parts                            | 144104              | 7                            |
| 17                       | Kontakthalter<br>Contact support  | 144105              | 3                            |
| 18                       | Radkontakt<br>Wheel contact   | 141462              | 6                            |
| 19                       | Getriebebesatz 5-teilig<br>Gear set 5-parts                                   | 144106              | 14                           |
| 20                       | Radsatz m.Zahnrad o.Haftring<br>Wheelset w.gear wheel w/o traction tyre       | 144107              | 11                           |
| 21                       | Schnecken Zahnrad doppelt Z=16/17<br>Worm gear wheel double Z=16/17           | 86419               | 6                            |
| 22                       | Zahnrad Z=23 gerade M=0,4<br>Gear wheel Z=23 straight M=0,4                   | 111679              | 3                            |
| 23                       | Zahnrad Z=21 G/M=0,4<br>Gear wheel Z=21 G/M=0,4                               | 86414               | 3                            |
| 24                       | Radsatz m.2 Haftringen m.Zahnrad<br>Wheelset w.2 traction tyres w.gear wheel  | 144108              | 12                           |
| 25                       | GF-Schraube M2x12 mm<br>Self-tapping screw M2x12 mm                           | 114944              | 3                            |
| 26                       | GF-Schraube M1,6x8 mm<br>Self-tapping screw M1,6x8 mm                         | 115037              | 3                            |
| 27                       | GF-Schraube M2x5 mm<br>Self-tapping screw M2x5 mm                             | 114966              | 3                            |
| 28                       | GF-Schraube M1,6x5 mm<br>Self-tapping screw M1,6x5 mm                         | 115269              | 3                            |
| 29                       | GF-Schraube M2x8 mm<br>Self-tapping screw M2x8 mm                             | 114923              | 3                            |
| 30                       | Lager f. Schneckenachse<br>Bearing for worm gear axle                         | 89749               | 6                            |
| 31                       | Anlaufscheibe<br>Washer   | 114622              | 3                            |
| 32                       | Kardankugel<br>Cardan ball  | 109614              | 4                            |
| 33                       | Kurzkupplung-Vorentkupplung<br>Short coupling-Preuncoupling                   | 115550              | 6                            |
| 34                       | Schnecke<br>Wormgear  | 86704               | 6                            |
| <b>AC - Wechselstrom</b> |   |                     |                              |
| 35                       | Schleifer 42mm<br>Slider  | 86030               | 14                           |
| 36                       | GF-Schraube M1,6x4mm<br>GF-Screw  | 85727               | 3                            |
| 37                       | Radsatz o. Zahnrad o. Haftring<br>Wheelset without gear without traction tyre | 126574              | 10                           |
| 38                       | Anschlussnippel<br>Nipple   | 111116              | 4                            |
| 39                       | Radsatz m. Zahnrad m. 2Haftring<br>Wheelset w. gear w. 2traction tyres        | 140827              | 12                           |
| 40                       | Beilagscheibe<br>Washer   | 112681              | 3                            |
| 41                       | Getriebebesatz 2-teilig<br>Gear set 2-parts                                   | 120966              | 6                            |